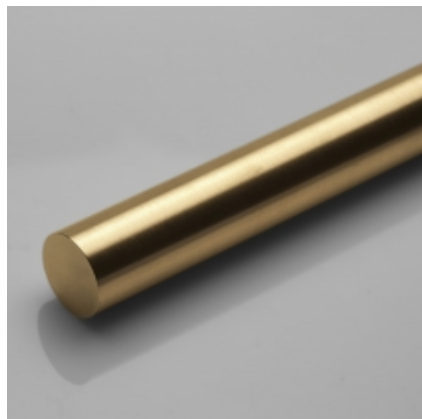


KOVOVÉ ELEKTRODY



- Metallic cylinders, squares, plates etc... are used as electrodes for EDM Die Sinking machining
- Principal advantages :low wear, high contour sharpness, good machinability

Balení

| Objednací č. | Průměr (mm) | Délka (mm) | Tolerance(mm) | Množství v balení |
|--------------|-------------|------------|---------------|-------------------|
| 951-402-005 | 0.5 | 175 | +/- 0.0125 | 10 |
| 951-402-006 | 0.6 | 175 | +/- 0.0125 | 10 |
| 951-402-007 | 0.7 | 175 | +/- 0.0125 | 10 |
| 951-402-008 | 0.8 | 175 | +/- 0.0125 | 10 |
| 951-402-009 | 0.9 | 175 | +/- 0.0125 | 10 |
| 951-402-010 | 1.0 | 175 | +/- 0.0125 | 10 |
| 951-402-011 | 1.1 | 175 | +/- 0.0125 | 10 |
| 951-402-012 | 1.2 | 175 | +/- 0.0125 | 10 |
| 951-402-013 | 1.3 | 175 | +/- 0.0125 | 10 |
| 951-402-014 | 1.4 | 175 | +/- 0.0125 | 10 |

Balení

| Objednací č. | Průměr (mm) | Délka (mm) | Tolerance(mm) | Množství v balení |
|--------------|-------------|------------|---------------|-------------------|
| 951-402-015 | 1.5 | 175 | +/- 0.0125 | 10 |
| 951-402-016 | 1.6 | 175 | +/- 0.0125 | 10 |
| 951-402-017 | 1.7 | 175 | +/- 0.0125 | 10 |
| 951-402-018 | 1.8 | 175 | +/- 0.0125 | 10 |
| 951-402-019 | 1.9 | 175 | +/- 0.0125 | 10 |
| 951-402-020 | 2.0 | 175 | +/- 0.0125 | 10 |
| 951-402-021 | 2.1 | 175 | +/- 0.0125 | 10 |
| 951-402-022 | 2.2 | 175 | +/- 0.0125 | 10 |
| 951-402-023 | 2.3 | 175 | +/- 0.0125 | 10 |
| 951-402-024 | 2.4 | 175 | +/- 0.0125 | 10 |
| 951-402-025 | 2.5 | 175 | +/- 0.0125 | 10 |
| 951-402-026 | 2.6 | 175 | +/- 0.0125 | 10 |
| 951-402-027 | 2.7 | 175 | +/- 0.0125 | 10 |
| 951-402-028 | 2.8 | 175 | +/- 0.0125 | 10 |
| 951-402-029 | 2.9 | 175 | +/- 0.0125 | 10 |
| 951-402-030 | 3.0 | 175 | +/- 0.0125 | 1 |
| 951-402-035 | 3.5 | 175 | +/- 0.0125 | 1 |
| 951-402-040 | 4.0 | 175 | +/- 0.0125 | 1 |
| 951-402-045 | 4.5 | 175 | +/- 0.0125 | 1 |
| 951-402-050 | 5.0 | 175 | +/- 0.0125 | 1 |
| 951-402-060 | 6.0 | 200 | +/- 0.05 | 1 |
| 951-402-065 | 6.5 | 200 | +/- 0.1 | 1 |
| 951-402-080 | 8.0 | 200 | +/- 0.1 | 1 |
| 951-402-100 | 10.0 | 200 | +/- 0.1 | 1 |
| 951-402-120 | 12.0 | 200 | +/- 0.1 | 1 |
| 951-402-140 | 14.0 | 200 | +/- 0.1 | 1 |
| 951-402-160 | 16.0 | 200 | +/- 0.1 | 1 |
| 951-402-200 | 20.0 | 200 | +/- 0.1 | 1 |
| 951-402-250 | 25.0 | 200 | +/- 0.1 | 1 |
| 951-402-300 | 30.0 | 200 | +/- 0.1 | 1 |
| 951-402-350 | 35.0 | 200 | +/- 0.15 | 1 |
| 951-402-400 | 40.0 | 200 | +/- 0.15 | 1 |
| 951-402-500 | 50.0 | 200 | +/- 0.15 | 1 |
| 951-402-600 | 65.0 | 200 | +/- 0.15 | 1 |
| 951-402-700 | 75.0 | 200 | +/- 0.15 | 1 |
| 951-402-900 | 90.0 | 200 | +/- 0.15 | 1 |
| 951-402-000 | 100.0 | 200 | +/- 0.15 | 1 |
| 951-402-125 | 125.0 | 200 | +/- 0.15 | 1 |
| 951-402-150 | 150.0 | 200 | +/- 0.15 | 1 |
| 951-402-800 | 16.0 | 100 | +/- 0.1 | 1 |

Balení

| Objednací č. | Průměr (mm) | Délka (mm) | Tolerance(mm) | Množství v balení |
|--------------|-------------|------------|---------------|-------------------|
| 951-402-801 | 20.0 | 100 | +/- 0.1 | 1 |
| 951-402-802 | 25.0 | 100 | +/- 0.1 | 1 |
| 951-402-803 | 30.0 | 100 | +/- 0.1 | 1 |
| 951-402-804 | 35.0 | 100 | +/- 0.15 | 1 |
| 951-402-805 | 40.0 | 100 | +/- 0.15 | 1 |
| 951-402-806 | 50.0 | 100 | +/- 0.15 | 1 |
| 951-402-807 | 50.0 | 50 | +/- 0.15 | 1 |
| 951-402-808 | 60.0 | 30 | +/- 0.15 | 1 |
| 951-402-660 | 60.0 | 60 | +/- 0.15 | 1 |
| 951-402-370 | 70.0 | 30 | +/- 0.15 | 1 |
| 951-402-670 | 70.0 | 60 | +/- 0.15 | 1 |
| 951-402-380 | 80.0 | 30 | +/- 0.15 | 1 |
| 951-402-680 | 80.0 | 60 | +/- 0.15 | 1 |
| 951-402-390 | 90.0 | 30 | +/- 0.15 | 1 |
| 951-402-690 | 90.0 | 60 | +/- 0.15 | 1 |