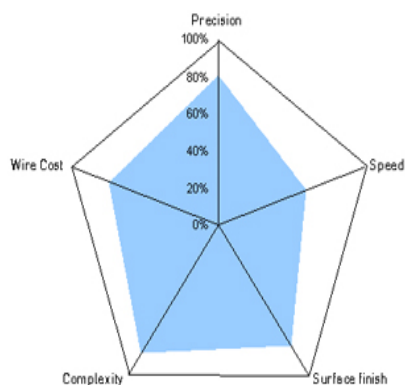
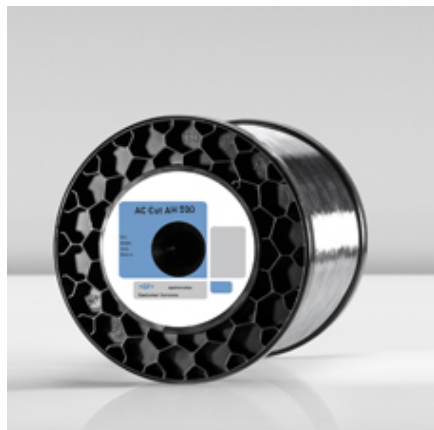


DRÁTY

AC CUT AH 500

Vysoce výkonný drát povlakovaný speciální zinkovou slitinou - nanášený Gamma difuzí



- AC Cut AH 500 the new generation of A wire that combine the surface quality with productivity dedicated to taper machining
- Technical characteristics of the AC Cut AH 500 enable to achieve very good surface quality in difficult machining conditions
- AC Cut AH500 is recommended for high quality parts that include complex machining with large taper $> 8^\circ$

Specifikace

Povlak	Vodivost	Prodloužení	Materiál	Resistance
Special zinc alloy	21% IACS	20 %	Mosaz CuZn37	500 N/mm ²

Balení

Objednáací č.	Průměr drátu (mm)	Spool weight(kg)	Spool Type	Spool / Package
950110016	0.25	8	K160	2
950110017	0.25	16	K200	1