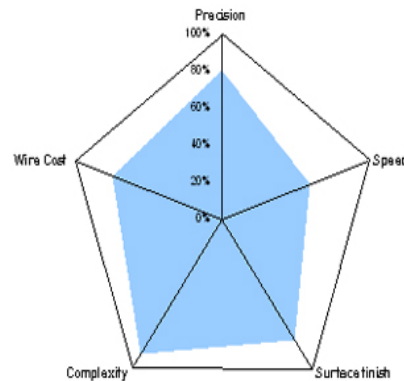
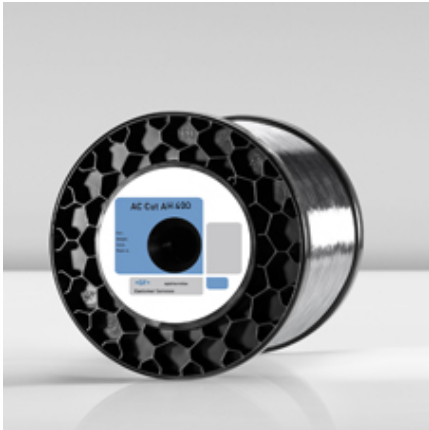


DRÁTY

AC CUT AH 400

Vysoce výkonný drát povlakovaný speciální zinkovou slitinou - nanášený Gamma difuzí



- AC Cut AH 400 the new generation of A wire that combine the surface quality with productivity dedicated to big taper machining
- Technical characteristics of the AC Cut AH 400 enable to achieve very good surface quality in difficult machining conditions .
- AC Cut AH400 is recommended for high quality parts that include complex machining with very large taper

Specifikace

Povlak	Vodivost	Prodloužení	Materiál	Resistance
Special zinc alloy	21% IACS	25 %	Mosaz CuZn37	400 N/mm2

Balení

Objednáací č.	Průměr drátu (mm)	Spool weight(kg)	Spool Type	Spool / Package
950111016	0.25	8	K160	2
950111017	0.25	16	K200	1